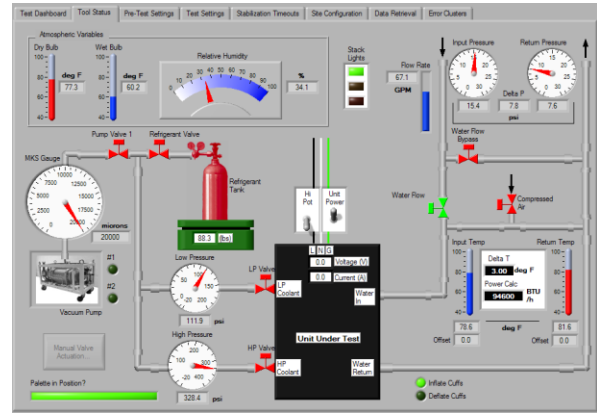


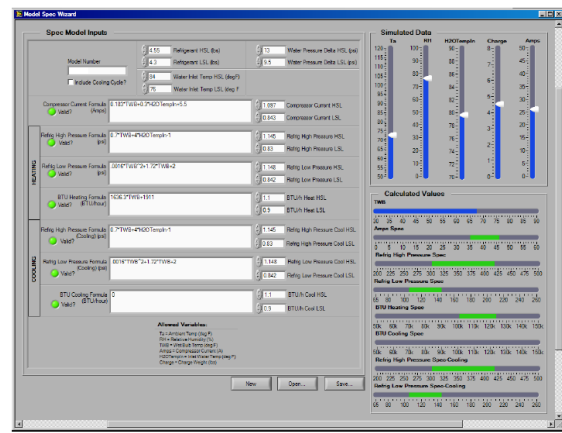
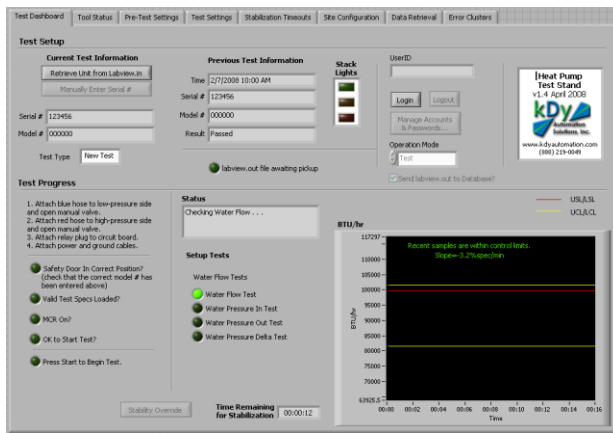
## Heat Pump Test System

- Robust, intuitive user interface
- Testing based on sophisticated statistical models and historical data
- All data sent to SQL server for easy querying and analysis
- Complete, recipe-driven test sequence for heating and cooling applications
- Reporting feature that allows engineers, managers, and customers to access test reports on any unit at any time



## Overview

A top manufacturer of pool and spa equipment asked KDY to develop a test system for their heat pump products. The solution KDY delivered allowed the customer to decrease test time, eliminate false failures and escapes, and better collect and analyze crucial engineering information.



## The Test Dashboard

Because the system would be used by engineers as well as production operators, KDY developed a simple but highly functional user interface that allows product testing, software configuration, mathematical model entry, and model sensitivity analysis.

## Data Viewing and Analysis

The data from each unit testing is stored in a SQL database that can be queried for engineering information as well as manufacturing throughput information at any time. This data can be modeled and then fed back into the KDY software to further refine the product testing. KDY developed a customized query that lets engineers, product managers, and even customers quickly retrieve complete summary of test information for any unit.